

# AlphaLine

A New Era of Innovative, Sustainable and Stylish Compact Living  
COMPANY RE is the proud partner of AlphaLine Compact Living Homes





# It's a Pleasure to Meet You!

Compact living is the future. As property values rise and space becomes a premium, homeowners are turning to smart, sustainable solutions to maximise their property's potential.

Whether you're looking for a secondary residence, dedicated home office, pool house, or additional income stream, Alphaline compact living homes offers premium, customisable compact living solutions tailored to your needs.

The value for money in tiny homes as secondary residences truly stacks up, often saving investors hundreds of thousands of dollars while reducing mortgage payments.

Alphaline is the gold standard in compact living solutions. COMPANY RE ensures you receive expert guidance, seamless service and access to Australia's leading home builders.

COMPANY RE sales team is here to guide you every step of the way through the entire process from exploring the right Alphaline compact living home and finance solution for your needs.

**Exclusive Offer:**

**Use code COMPANYRE25 when you enquire to receive a FREE UPGRADE BONUS on your Alphaline compact living home. Contact us today on 1300 744 008.**

We look forward to helping you explore your options.

Let's connect.

Warm regards,

COMPANY RE  
E: [connect@companyre.com.au](mailto:connect@companyre.com.au)  
T: 1300 744 008



# About Alphaline

With over five decades of expertise in the building industry, Alphaline is proud to lead the way in innovative and sustainable compact living homes. Our legacy is built on quality craftsmanship, environmental responsibility and a commitment to customer satisfaction.

At Alphaline, we specialise in designing and constructing compact living spaces, offering both mobile and fixed structures. We believe that functionality should never come at the expense of comfort and our thoughtfully designed living solutions ensure well-being, practicality and aesthetic appeal.

With industry-leading production capabilities, we deliver premium solutions with efficiency and speed—without ever compromising on quality. Our dedication to sustainable building practices ensures that every structure we create aligns with the highest environmental standards.

Experience the future of compact living with our expertly designed solutions:

- Modular Units: Stylish, functional and customisable for various uses.
- Tourist Cabins: Designed for comfort, perfect for holiday retreats.
- Glamping Rooms: Luxury meets nature in these high-end, eco-friendly designs.
- Secondary Dwelling: The solution for additional living space or investment opportunities.
- Tiny Homes on Wheels: Mobile, flexible and built for a modern lifestyle.

We look forward to working with you.

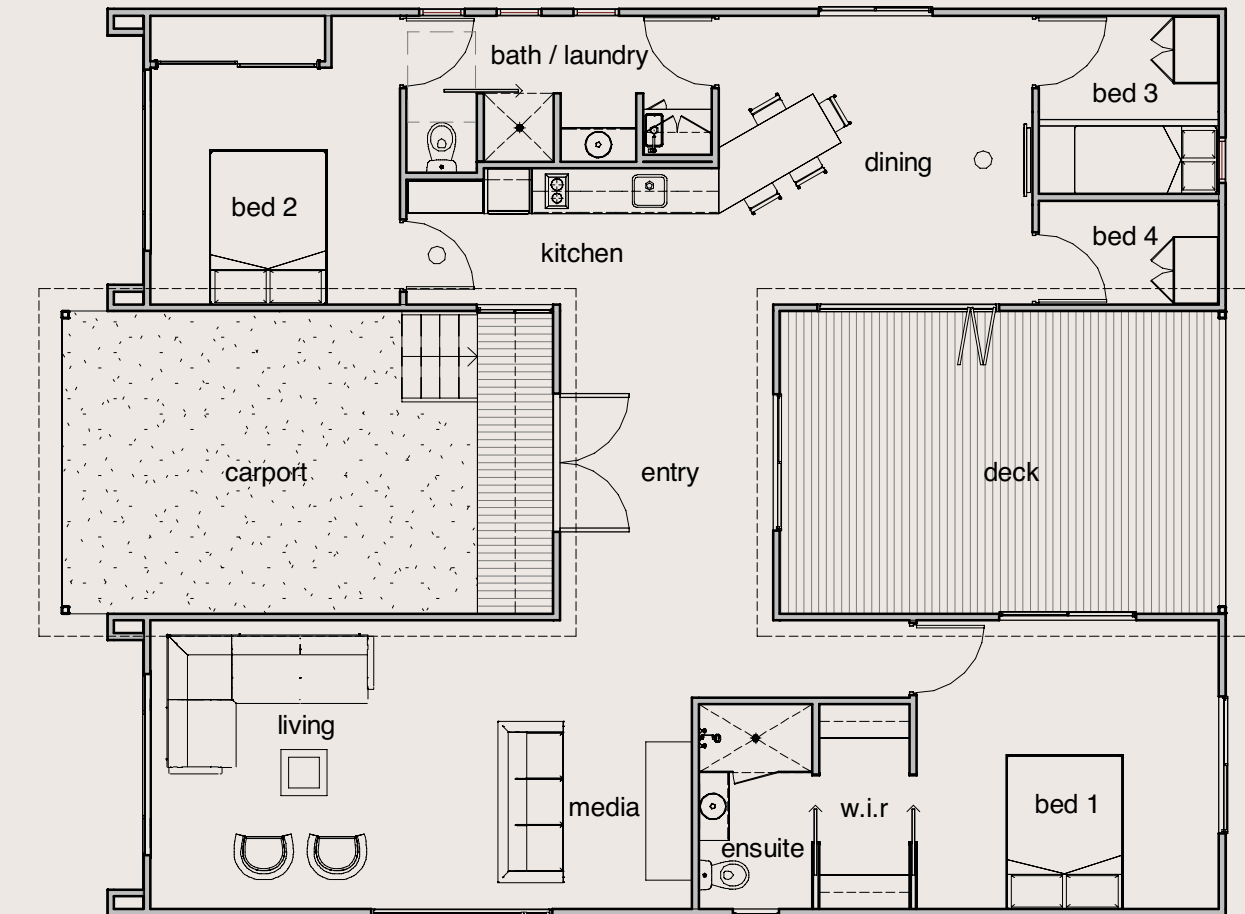






# FIXED H■MES





## Paradise

14800mm x 12000mm

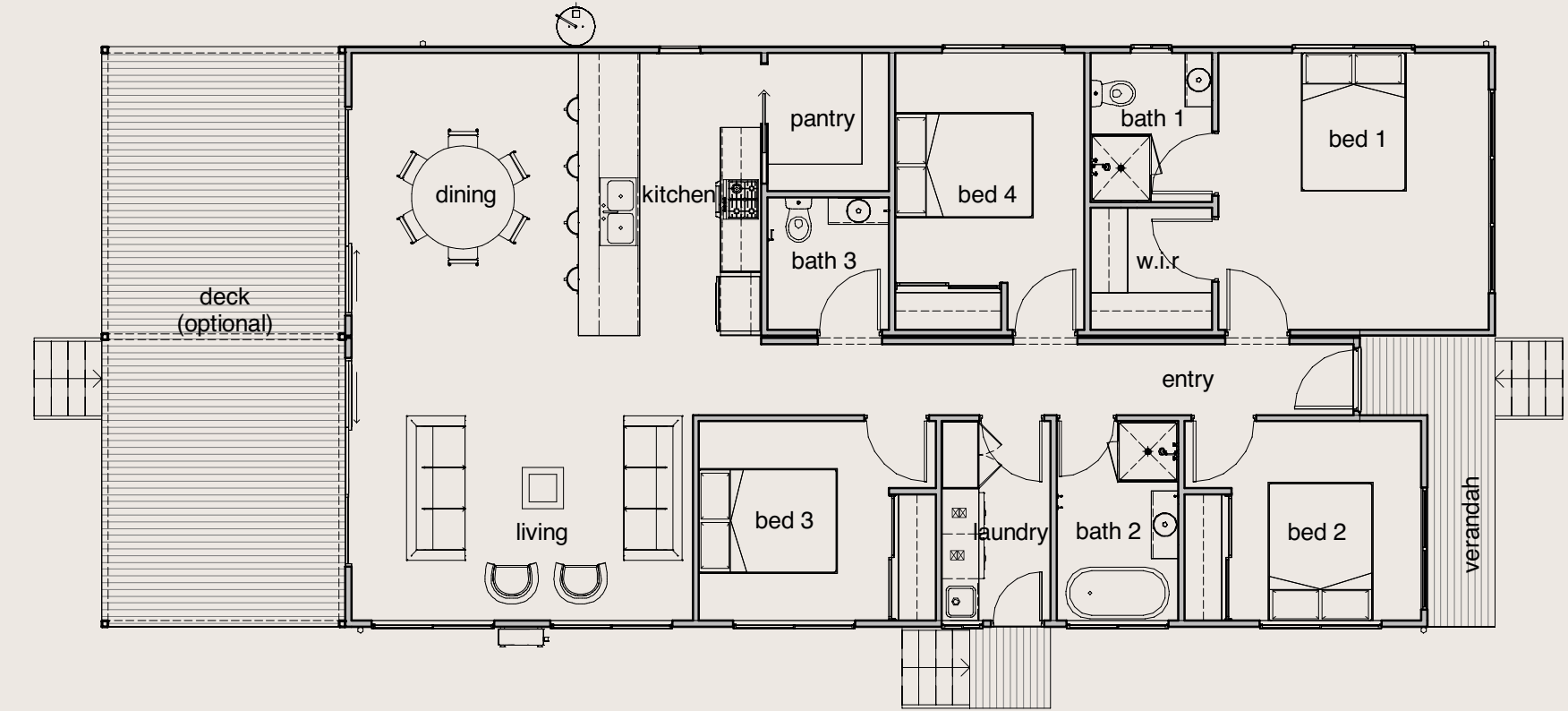
4 Bedroom  
2 Bathroom  
1 Car Park

Paradise is one of our largest homes, offering generous space and smart design for families seeking comfort without compromising style. The open-plan kitchen, dining and living areas flow seamlessly onto a large rear deck for easy indoor-outdoor living. A private master suite with ensuite and walk-in robe, plus a media room and carport, complete this well-appointed home.

### Features:

- Private master with ensuite and walk-in robe
- Open-plan kitchen, dining and living spaces
- Dedicated media room
- Expansive rear deck perfect for entertaining
- Bath/laundry combo for efficient use of space
- Covered carport for one vehicle





## Broadbeach

17000mm x 8570mm

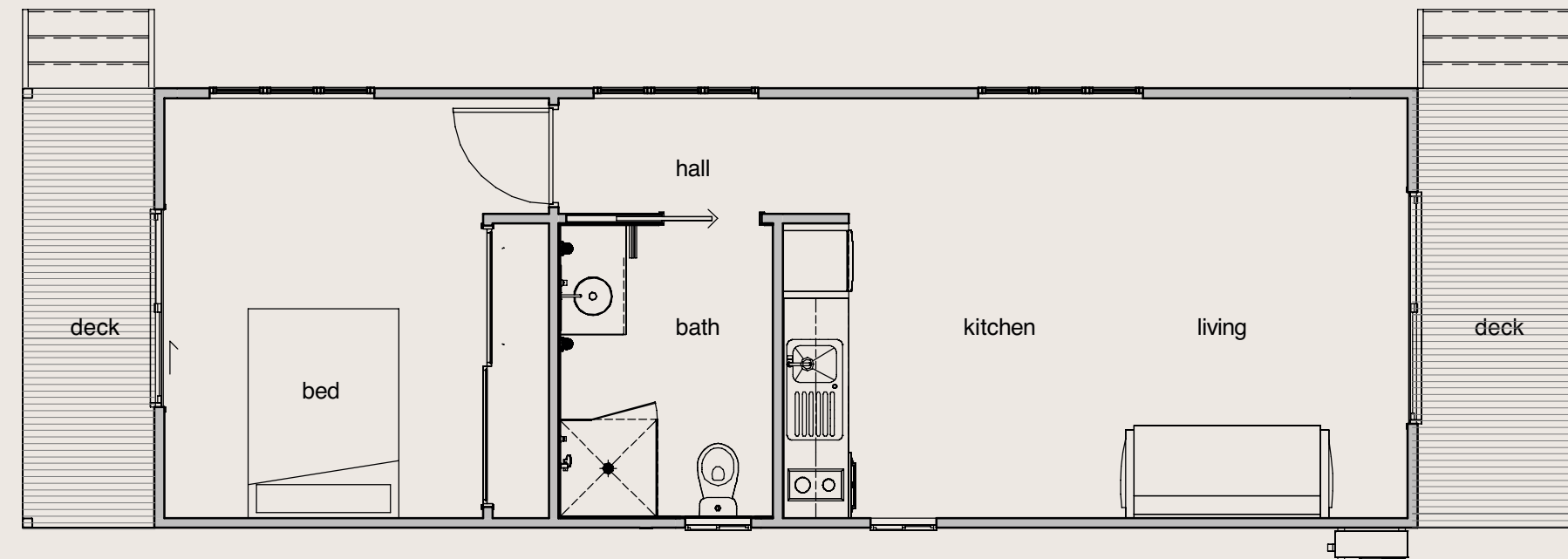
4 Bedroom  
3 Bathroom

Broadbeach is spacious and thoughtfully designed to offer a combination of comfort and functionality. It's one of the most accommodating layouts in the range. The open-plan kitchen, dining and living areas flow out to an optional rear deck, perfect for entertaining or relaxing. A dedicated pantry, walk-in robe and front verandah add to the home's practical yet stylish appeal.

### Features:

- Private master with ensuite and walk-in robe
- Open-plan kitchen, dining and living layout
- Large walk-in pantry for extra kitchen storage
- Optional rear deck for extended outdoor living
- Separate laundry room
- Front verandah for a welcoming entry





## Labrador

14200mm x 4000mm

1 Bedroom  
1 Bathroom

Labrador is a sleek and minimal one-bedroom tiny home designed for simplicity and style. With its clever open-plan design, the kitchen and living areas feel airy and inviting, perfect for relaxing or entertaining. A full-sized bathroom and internal hallway add privacy and functionality. Dual front and rear decks extend the living space outdoors, ideal for morning coffee or evening unwinding.

### Features:

- Open-plan kitchen and living area
- Hallway separation for added privacy
- Two decks – front and back – for indoor-outdoor flow
- Ideal for singles, couples, or for commercial/private guest accommodation





## Southport

9500mm x 3000mm

1 Bedroom  
1 Bathroom

Southport is the newest addition to our luxury tiny home range, thoughtfully designed to maximise comfort and functionality. One of its standout features is the spacious kitchen complete with an island bench — a rare find in compact living. The layout offers ease of movement with two sliding doors that open up to outdoor decks, enhancing indoor-outdoor flow.

### Features:

- Bathroom with space for a washing machine
- Open-plan kitchen with island bench and overhang
- 2-burner gas cooktop
- Two sliding doors for easy outdoor access





## Currumbin

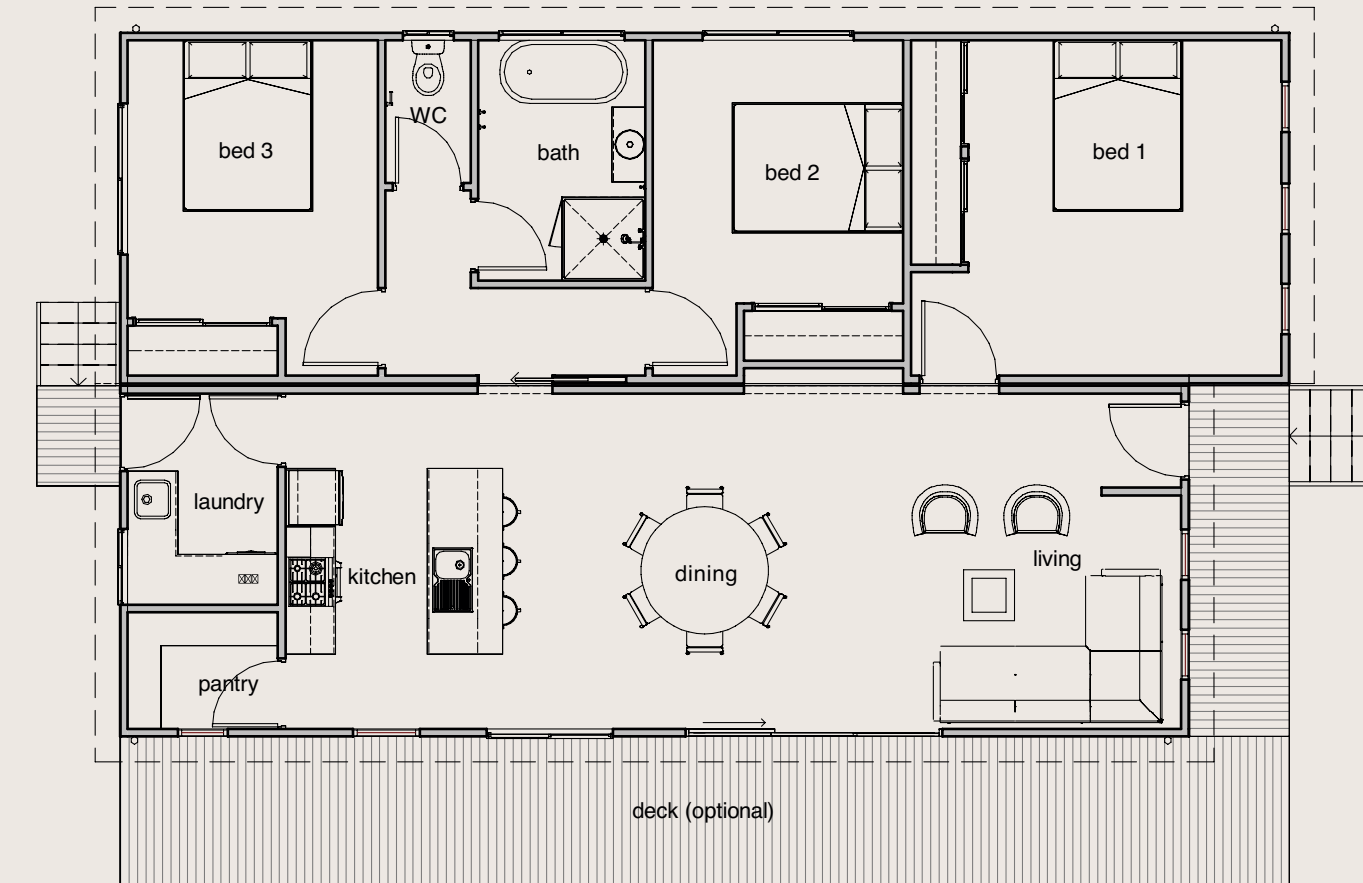
1400mm x 8430mm

3 Bedroom  
1 Bathroom

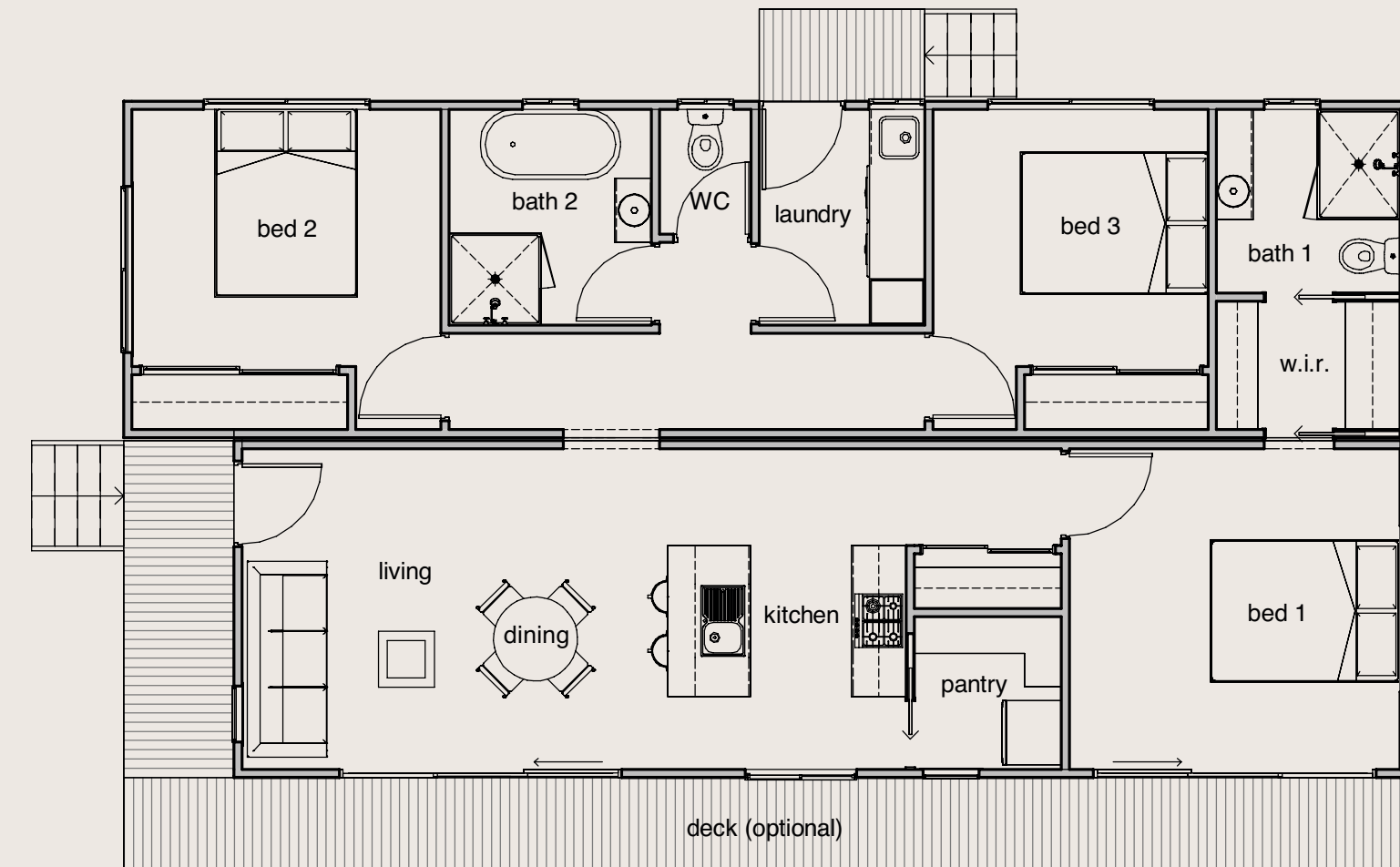
Currumbin maximises space and comfort with three well-sized bedrooms, a central open-plan living, meals and kitchen area and seamless indoor-outdoor flow to an optional deck. Thoughtful touches like a walk-in pantry and separate laundry make everyday living functional and convenient. Ideal for small families or downsizers, it offers a practical layout without compromising on lifestyle.

### Features:

- Open-plan kitchen, dining and living area
- Walk-in pantry and full kitchen
- Separate laundry room
- Bathroom with bathtub and separate shower
- Compact, efficient design suitable for family living or holiday stays







## Coomera

14000mm x 7370mm

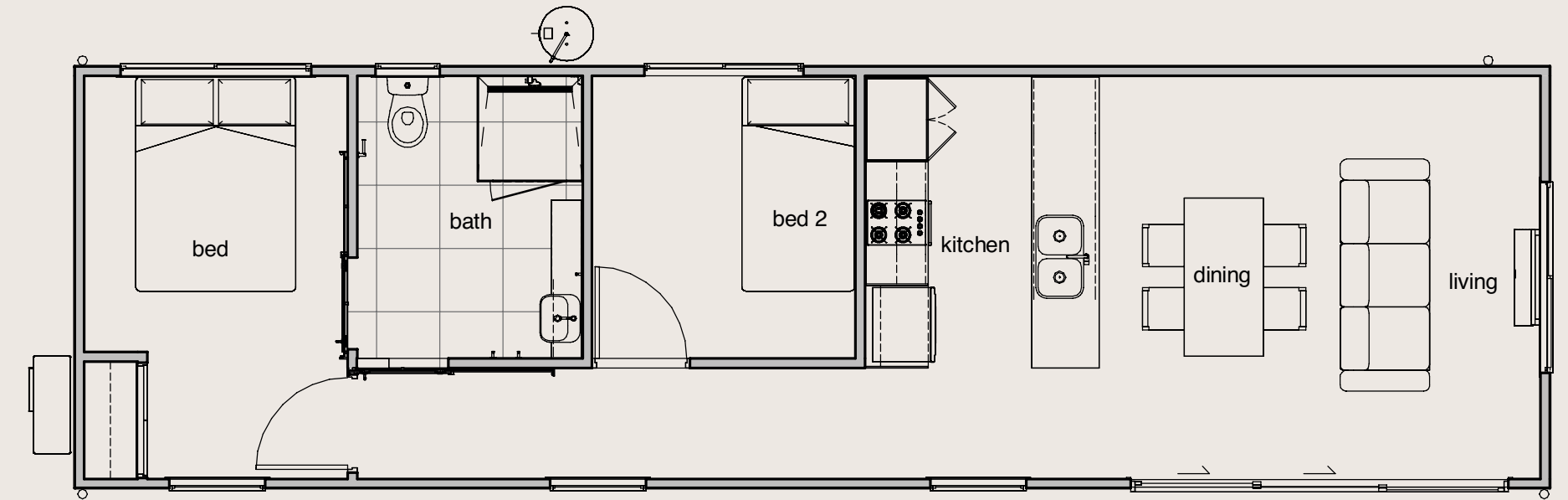
3 Bedroom  
2 Bathroom

Coomera offers three bedrooms, including a master suite with walk-in robe and private ensuite. The heart of the home features an open-plan kitchen, meals and living area that connects seamlessly to the optional deck. With two full bathrooms, separate laundry, butler pantry and ample storage, this home blends comfort and practicality for everyday living.

### Features:

- Private master with ensuite and walk-in robe
- Walk-in pantry and island bench in kitchen
- Separate laundry and WC
- Optional front-facing deck for entertaining
- Efficient layout with hallway separation
- Dual access points for flexibility and flow





## Coolangatta

14000mm x 4000mm

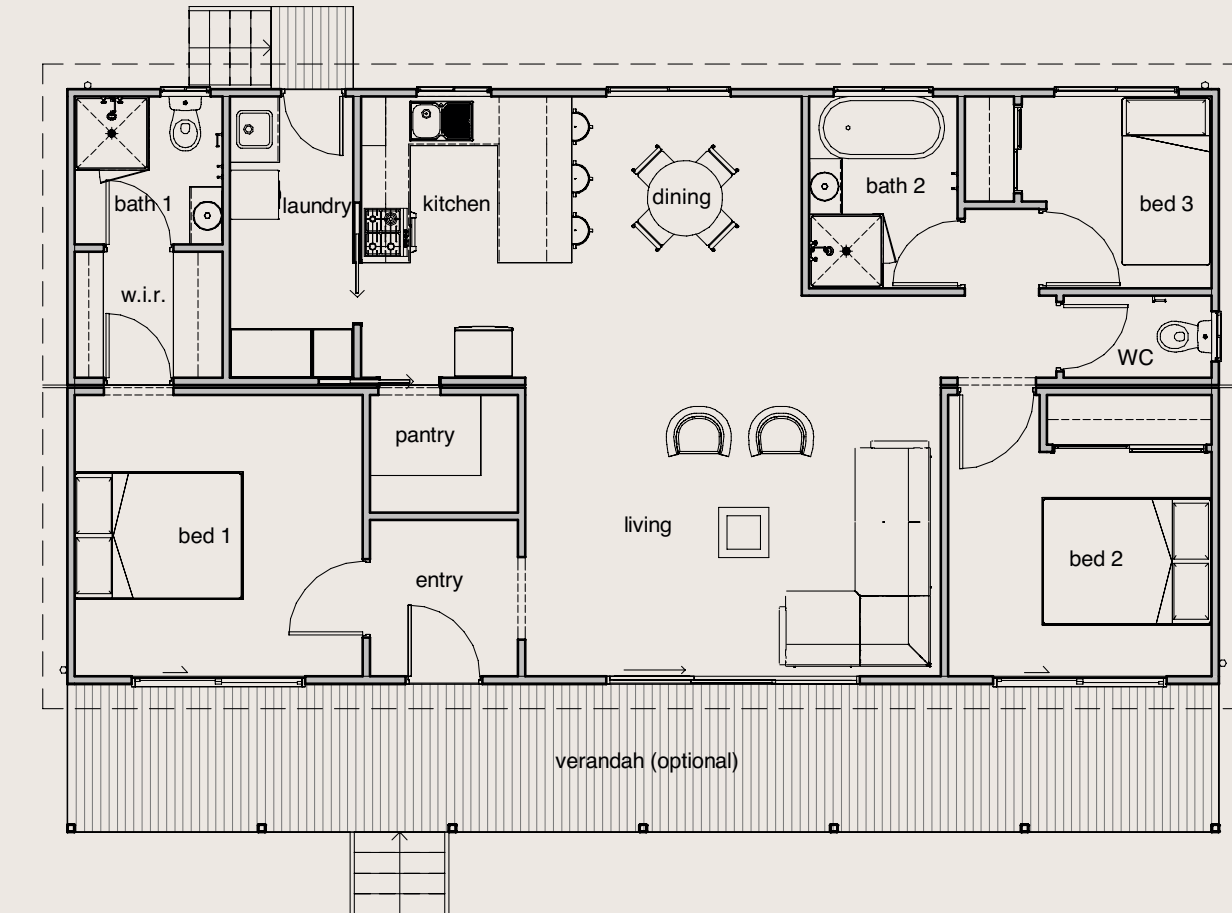
2 Bedroom  
1 Bathroom

Coolangatta is a thoughtfully designed modular tiny home that blends laid-back luxury with smart functionality. Its open-plan living, dining and kitchen zone creates an inviting sense of space, while the two-bedroom layout offers comfort and privacy. Clean lines and natural light make it a standout choice for modern tiny living.

### Features:

- Two-bedroom layout with functional flow
- Open-plan kitchen, dining and living space
- Kitchen includes island and overhead storage
- A generous lounge area – designed to be the heart of relaxation and quality time





## Burleigh

14000mm x 7230mm

3 Bedroom  
2 Bathroom

Burleigh is a balanced home that blends comfort, practicality and a relaxed lifestyle feel. With three well-separated bedrooms, dual bathrooms and a spacious central living zone, this layout is perfect for those seeking extra flexibility without compromising on space. An optional verandah completes the picture, making Burleigh ideal for both everyday living and laid-back entertaining.

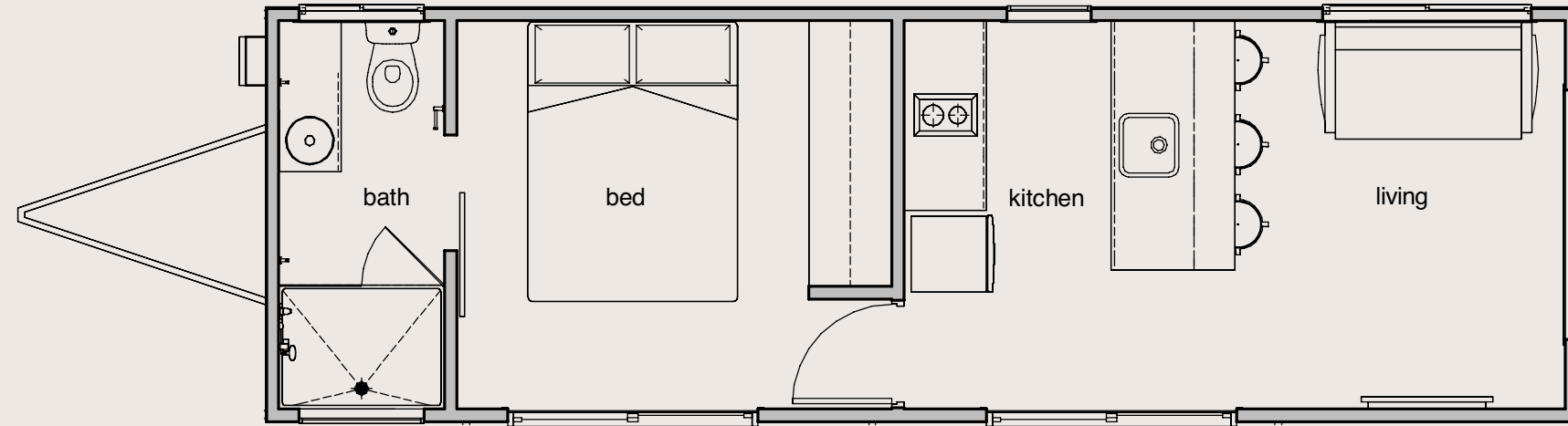
- Private master with ensuite and walk-in robe
- 2 full bathrooms plus an additional WC
- Open-plan living, kitchen and living area
- Walk-in pantry and dedicated laundry
- Optional verandah for outdoor relaxation
- Ideal for growing families or dual-occupancy living





# M ■ VABLE HOMES





## Ashmore

9500mm x 3000mm

1 Bedroom  
1 Bathroom

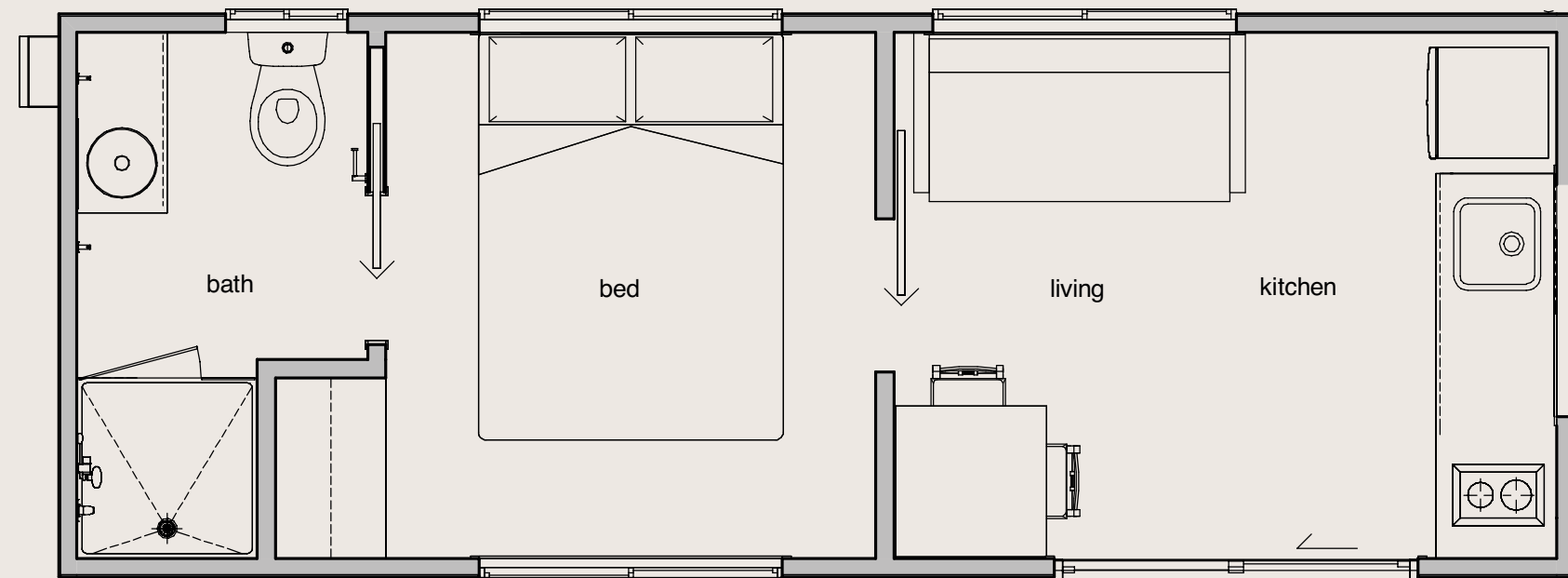
Ashmore is a sleek, streamlined tiny home that delivers effortless flow and everyday functionality in a minimal footprint. The open-plan kitchen with island seating anchors the home, while the bedroom and full bathroom offer privacy and comfort at the rear. With smart storage and a stylish layout, Ashmore proves that simple design can be both beautiful and highly livable.

### Features:

- Private bedroom with ensuite
- Central kitchen with island bench and breakfast bar seating
- Open-plan living area with room to relax
- Smart use of storage throughout
- Ideal for singles, couples, or minimalist living







## Miami

7550m x 2800m

1 Bedroom  
1 Bathroom

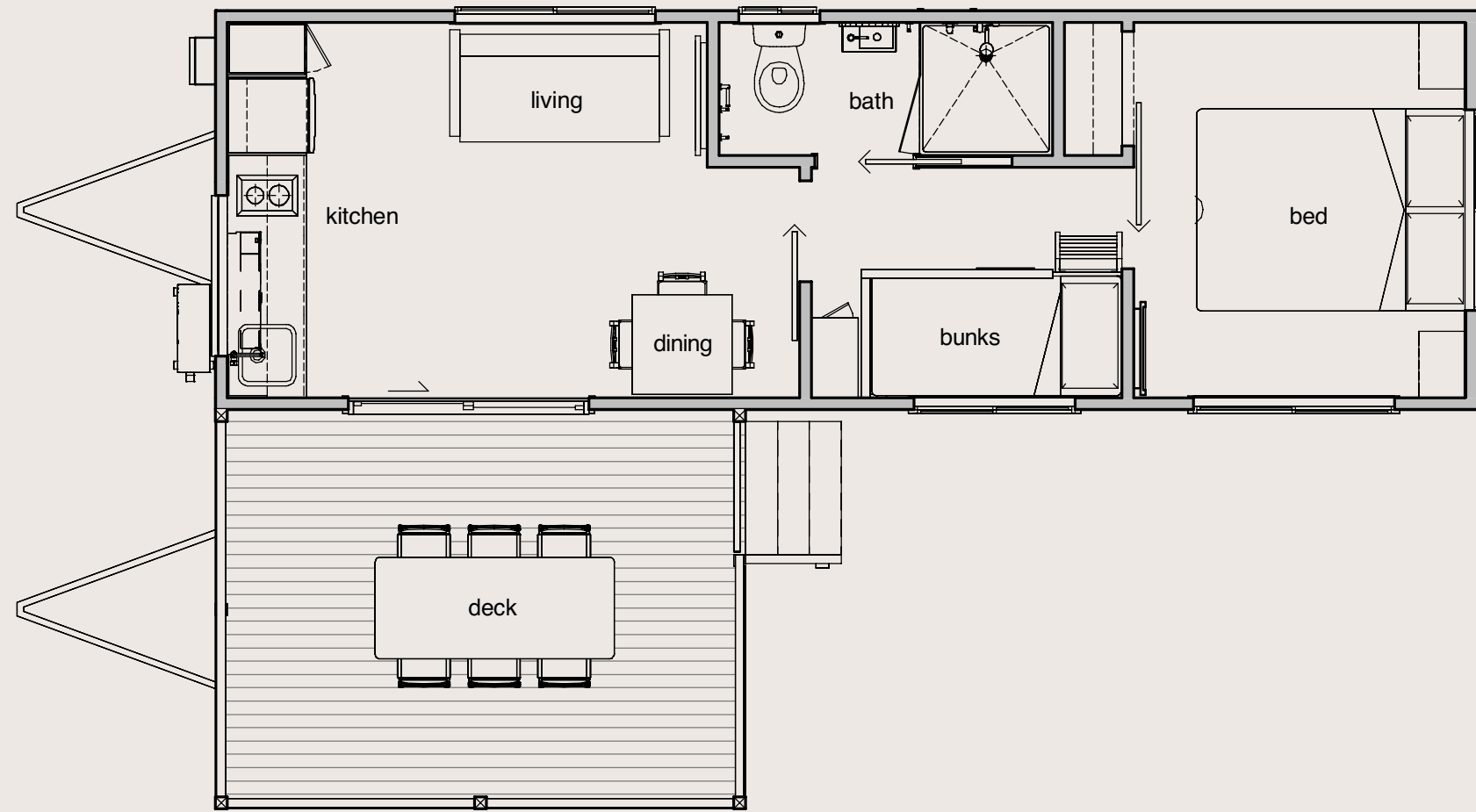
Miami is an exceptionally crafted tiny home that delivers comfort, privacy and thoughtful functionality. A separate queen-sized bedroom with ensuite offers a true retreat, while the open-plan living and kitchen area is designed for everyday ease. With smart storage, generous appliance space and a practical layout, Miami proves that compact living can still feel spacious and refined.

### Features:

- Private bedroom with ensuite
- Fits a queen-sized bed comfortably
- Dedicated space for a washing machine
- Spacious kitchen with space for a fridge
- Ideal for singles or couples seeking a stylish, self-contained hom







## Robina

9500mm x 6000mm

2 Bedroom  
1 Bathroom

Robina is a thoughtfully designed tiny home that brings together functionality, comfort and family-friendly living in a beautifully compact footprint. With a private main bedroom, built-in bunks and an open-plan living space that flows effortlessly onto a generous deck, it's the ideal design for connection and retreat.

### Features:

- Private main bedroom with ample space
- Built-in bunk beds for kids or guests
- Open-plan kitchen, dining and living area
- Direct access to a large outdoor deck
- Compact design that maximises functionality
- Perfect for families, couples, or holiday stays







# Dream It. Design It. Live It.

We believe your home should be as unique as you are. Our luxury tiny and compact living homes are fully customisable, giving you the freedom to design a space that perfectly suits your lifestyle, whether it's a secondary residence, guest retreat, pool house, home office, or boutique rental opportunity.

From our Lineage Range to Mini Mansions, every Alphaline compact living home is built with premium materials, architectural elegance and thoughtful design. Personalise your floor plan, select high-end finishes and add bespoke features to create a home that reflects your style and needs.

## Tailor Every Detail:

- Choose from a range of modern, sustainable designs
- Select high-quality finishes, fixtures and appliances
- Add extra space with decks, storage solutions & smart layouts
- Upgrade with solar power, smart home technology & premium fittings

Your Vision, Your Home. Work with our expert team to bring your dream compact home to life.

COMPANY RE sales team is here to guide you every step of the way through the entire process from exploring the right Alphaline compact living home and finance solution for your needs.

**Exclusive Offer: Use code COMPANYRE25 when you enquire to receive a FREE UPGRADE BONUS on your Alphaline home. Contact us today on 1300 744 008.**





# T ■ URISM AND PARKS

COMPANYRE

OWN

YOUR

FUTURE



34





## Tourism and Parks

Experiential tourism is at its peak, with travellers seeking unique, immersive stays that blend luxury, sustainability and connection to nature. Alphaline's luxury tiny and compact living homes are the perfect solution for hotels, resorts and tourist parks looking to elevate their accommodation offerings.

Tourist parks and resorts are increasingly turning to modular, adaptable accommodation solutions to meet changing guest expectations. Whether it's:

- Luxury Eco-Pods for nature retreats
- Self-Contained Beachfront Villas for coastal escapes
- Compact Luxury Suites for boutique hotel expansions
- Off-Grid Cabins for adventure getaways

Alphaline delivers architecturally designed, fully customisable accommodations that seamlessly integrate with the natural landscape, enhancing the guest experience while maximising revenue potential for operators. Partner with Company RE and Alphaline to create a next-level tourism experience. If you are looking for land to build your tourism park on, we can help you with that too!

## Innovative Tourism Projects: QT & Binna Burra

**QT Hotels | Gold Coast** – A leader in hospitality innovation, QT Hotels partnered with Alphaline to create bespoke, high-end compact accommodations, providing guests with a luxurious and intimate retreat experience. These exclusive tiny homes redefine beachfront stays, offering a stylish, self-contained alternative to traditional hotel rooms.

**Binna Burra Lodge | Scenic Rim** – Nestled in the breathtaking Gondwana Rainforests, Binna Burra Lodge has embraced eco-conscious design by integrating Alphaline's luxury cabins. These sustainable dwellings enhance the lodge's reputation as a premier eco-tourism destination, allowing guests to immerse themselves in nature without compromising on comfort.





# OUR DIFFERENCE





# What’s Included in Every Alphaline Home?

## Pre-Construction

- Preparation of documentation for Council approval (Council fees not included)
- Drafting of pre-engineered plans
- Energy Efficiency Certification

## Construction

### Steel Base Frame

- MODFLOOR steel chassis in ZinMag ZM310 (high corrosion resistance)
- 20-Year Structural Warranty
- Up to 50-Year Corrosion Warranty (location dependent)

### Steel Frames & Trusses

- 89mm CADSTEEL frames and trusses
- Engineer certified (Form 15 pre-manufacture / Form 12 post-construction)
- 20-Year Structural Warranty
- Up to 50-Year Corrosion Warranty

### Deck (If Included)

- 250mm MODFLOOR steel chassis
- 23mm Modwood or similar composite decking

### Flooring

- 19mm structural plywood
- Floor joists spaced at 450mm centres

### On-Site & Compliance

- QBCC Warranty Insurance
- Preliminary site inspection for cost estimate and orientation
- Preliminary footing design
- Geotechnical soil test (additional cost, region dependent)

## Exterior

### Cladding

- Colorbond steel cladding (vertical install)
- James Hardie or Weathertex options

### Roofing

- Colorbond steel roofing
- Colorbond fascia and gutter
- Insulated roofing panel over deck (if applicable)

### Insulation

- Ceiling: R4.0 Knauf Earthwool batts (no added formaldehyde)
- Walls: R2.5 batts plus wall wrap sisalation

### Windows & Doors

- Aluminium windows and sliding glass doors

## Interior

### Internal Linings

- VJ groove internal linings to walls and ceiling (maintenance-free)
- Ceiling height: minimum 2440mm (kitchen, lounge & bedrooms)
- Wet wall panelling to bathrooms

### Doors & Trims

- External aluminium doors (as per plan)
- Internal flush panel doors with Lockwood or gainsborough hardware
- Cavity sliders (as per plan)
- 42x11mm splayed skirting and architraves

### Plumbing

- Certified plumbing inspection
- Specifications subject to design and availability

## Kitchen

- Cabinetry with soft-close drawers and hinges
- Overhead cupboards (as per plan)
- Laminated granite-look benchtop
- Aluminium or glass splashback (design dependent)
- Autusi 60cm 4-zone cooktop
- Autusi 60cm wall oven with hot air function (or similar)
- Autusi 60cm slide-out rangehood with external ducting
- Single bowl stainless steel sink with chrome mixer

## Bathrooms & Toilets

- Wall-hung vanity with large mirror
- Wet wall shower lining over waterproof base
- Composite shower base
- Ceiling exhaust fan (to bathroom and ensuite)
- Dual-flush toilet suite
- Chrome towel rail and toilet roll holder
- Chrome flickmixer tapware
- Waterproofing to NCC standards

## Electrical

- Independently certified to AS3000 standards
- 12-pole sub-board with main switch and RCDs
- Up to 10 LED downlights (as per plan)
- 2 external up/down lights
- Up to 3 hardwired photoelectric smoke detectors
- TV point with coaxial cable to future antenna
- Up to 10 power points including 2 USB points
- Weatherproof external double power point
- Gas instantaneous hot water system (externally mounted)

## Floor Coverings

- Gerfloor timber plank vinyl flooring throughout





## Why Choose Alphaline Compact Living Homes?

- Industry Leaders: Over 50 years of experience in building high-quality, sustainable living solutions.
- Customisable Designs: Tailor our models to suit your lifestyle and needs.
- Eco-Friendly & Energy-Efficient: Committed to sustainable, environmentally conscious construction.
- Expert Guidance: Our team is here to support you every step of the way, from design to delivery.
- Awards: Winner of tiny home industry awards, best luxury build 2023

Contact us today to explore your dream tiny home or modular living solution. Use code **COMPANYRE25** when you enquire to receive a **FREE UPGRADE** on your Alphaline home!

## ISO Compliance & Regulatory Adherence

We strictly follow all relevant industry regulations and compliance standards, ensuring excellence in every build.

- Quality Assurance: Every structure meets or exceeds applicable building codes and industry standards.
- Environmental Responsibility: Our sustainable building practices align with the highest environmental benchmarks.
- Safety Priority: Workplace Health and Safety is paramount, ensuring a secure and compliant working environment for our team.



# Our Commitment to you

COMPANY RE is proud to bring you the specialists in architecturally designed compact living homes.

Our open-plan designs are crafted to optimise the experience for both occupants and owners. Built with sustainability and health in mind, each home is constructed using carefully selected materials that reflect our core values of quality and environmental responsibility.

We offer a broad range of internal and external design options, providing complete fit-out assistance to ensure the materials and finishes perfectly complement your location. Our designs are not only robust and adaptable but also engineered for easy transport and to withstand demanding environments, including cyclonic, coastal and bushfire-prone areas. For higher-risk zones, we offer simple upgrades to our standard materials, ensuring compliance without sacrificing our high standards of quality.

We are committed to delivering housing solutions that not only meet but exceed the expectations of our clients, driving long-term success and satisfaction. As the proud sales partner of Alphaline compact living home, COMPANY RE sales team is here to guide you every step of the way through the entire process from exploring the right Alphaline compact living home and finance solution for your needs.

### Exclusive Offer:

Use code **COMPANYRE25** when you enquire to receive a **FREE UPGRADE BONUS** on your Alphaline compact living home. Contact us today on **1300 744 008**.



# Your Alphaline Journey: 5 Simple Steps

At Alphaline, we make the process of designing and building your luxury tiny or compact tiny home seamless and stress-free. Here’s how it works:

- 01

Consultation & Site Assessment

Start with a free Company RE consultation where we discuss your vision property and lifestyle needs. Our team will assess your site and guide you through design options, council regulations, regulations and feasibility.
- 02

Finance & Approval

Speak with our expert Company RE finance broker to explore financing options tailored to your budget. We'll also assist with council approvals, permits and any necessary planning requirements.
- 03

Custom Design & Inclusions

Choose from our Lineage Range to Mini Mansions or work with us to custom design your dream compact home. Select finishes, layouts and upgrades to suit your style and functionality needs.
- 04

Construction & Build

Once approved, we begin construction using premium materials and expert craftsmanship. Our team ensures every detail is built to the highest standard, with regular updates on progress.
- 05

Delivery & Installation

Your Alphaline home is delivered and installed on-site, ready for you to enjoy. We handle final connections, finishing touches, and ensure a smooth handover so you can move in with ease.

**Exclusive Offer:** Use code **COMPANYRE25** when you enquire to receive a **FREE UPGRADE BONUS** on your Alphaline compact living home. Contact us today on **1300 744 008**.





1300 744 008  
[connect@companyre.com.au](mailto:connect@companyre.com.au)  
[companyre.com.au](http://companyre.com.au)

Use code **COMPANYRE25** when you enquire to receive a **FREE UPGRADE BONUS** on your Alphaline home!

